

EJB SERIES JUNCTION BOXES

INDUSTRY STANDARDS
ATEX Directive 94/9/EC

EN 60079-0
 EN 60079-1
 EN 60079-31
 EN 60079-11
 EN 60079-26
 EN60529
 EN 60439-1

Certifications

II 2(1) GD Ex d [ia] IIB Ex tD A21 T5/T6 IP 65/66/67
 II 2GD Ex d IIB+H2 T6,T5, T4 Gb Ex tb IIIC T85°C, T100°C, T135°C Db IP66/67
 II 2(1) GD Ex d [ia Ga] IIB+H2 T6, T5 Gb Ex tb [ia Da] IIIC T85°C, T100°C Db IP66/67

CESI 00 ATEX 036U (Component)
 CESI 01 ATEX 026 (terminal box)
 CESI 01 ATEX 027 (Control, command and signaling units)
 CESI 02 ATEX 073 (Interface units)
 CESI 03 ATEX 015 (Unit with dischargers)
 IECEx TSA 06.0011 - GOST R - BRAZILIAN

GOST-R, INMETRO, Australia certifications available

Ambient Temperature: -50 C to +60C

APPLICATION

EJB series junction boxes are enclosures applicable for Zone 1, 2, 21 or 22 with ATEX and IECEx certifications. They can be used as junction boxes with or without terminals or for installation of electrical equipment such as circuit breakers, signals, disconnectors, remote control switches or transformers.

Body and cover can be drilled and threaded according to customers' specification. In accordance with rules, Hoffman must perform the drilling.

FEATURES

- Low copper aluminum alloy enclosure with stainless steel bolts and screws for corrosion resistance
- Cast hinges for robust construction (except for EJB-55)
- High temperature-resistant silicone gasket provides IP66 / 67 rating
- Stainless steel bolts and screws
- Electrogalvanized steel mounting bracket
- Epoxy coating RAL 7035 (Light grey) coating
- Aluminum alloy passes the tests required by standards EN 60068-2-30 (hot/humid cycles) and EN 60068-2-11 (salt mist tests)
- Internal mounting panel
- Body and cover can be drilled and threaded according to customers' specifications

ACCESSORIES

Hazardous Location Breather Drains
 Hazardous Location Window Kits

OPTIONS

Internal anti-condensation coating RAL 2004 (pure orange)
 External epoxy coating in different color (specify the RAL number)

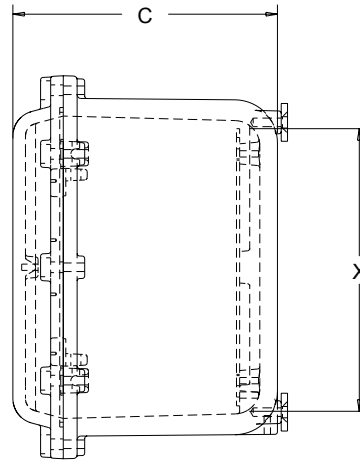
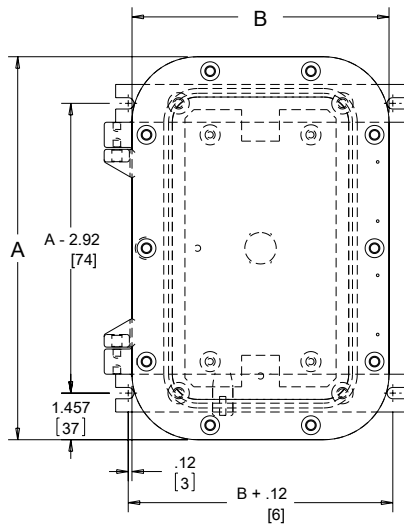
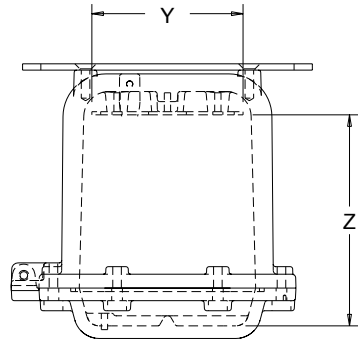
MODIFICATION AND CUSTOMIZATION

Hoffman excels at modifying and customizing products to your specifications. Contact your local Hoffman sales office or distributor for complete information.

BULLETIN: HL5AA

Standard Product

Catalog Number	AxBxC in./mm	X in./mm	Y in./mm	Z in./mm	Material	Weight (lb.)	Weight (kg)
EJB1	11.97 x 8.03 x 8.58	8.66	4.72	6.59	Aluminum	22.70	10.30
	304 x 204 x 218	220	120	167			
EJB3A	14.33 x 11.18 x 10.94	11.02	7.87	8.41	Aluminum	45.40	17.60
	364 x 284 x 278	280	200	214			
EJB4A	17.01 x 13.07 x 11.77	13.39	9.45	9.19	Aluminum	58.63	26.60
	432 x 332 x 299	340	240	233			
EJB45A	22.32 x 15.24 x 11.73	18.11	11.02	9.00	Aluminum	88.38	40.10
	567 x 387 x 298	460	280	229			
EJB5A	24.88 x 17.01 x 10.67	21.26	13.39	10.85	Aluminum	115.05	52.20
	632 x 432 x 271	540	340	276			
EJB6	34.25 x 22.05 x 18.90	28.35	19.69	14.67	Aluminum	351.76	159.60
	870 x 560 x 480	720	500	373			
EJB3BA	14.33 x 11.18 x 8.58	11.02	7.87	6.04	Aluminum	38.79	17.60
	364 x 284 x 218	280	200	153			
EJB4BA	17.01 x 13.07 x 9.02	13.55	9.45	6.44	Aluminum	49.81	22.60
	432 x 332 x 229	344	240	164			
EJB45BA	22.32 x 15.24 x 9.96	18.11	11.02	7.03	Aluminum	80.45	36.50
	567 x 387 x 253	460	280	479			
EJB5BA	24.88 x 17.01 x 9.02	21.26	13.39	7.97	Aluminum	98.30	44.60
	632 x 432 x 229	540	340	202			
EJB6B	34.25 x 25.59 x 14.96	28.35	19.69	10.73	Aluminum	307.90	139.70
	870 x 650 x 380	720	500	272			



89115226